



European Board of Urology

Page | 1

PART 1 WRITTEN EXAM 2024



DATE & TIME

Thursday 14 November 2024 from 14:30-16:30 Central European Time (CET).

TYPE & FORMAT

The exam consists of 110 single correct answer MCQs and taken online via the platform assessmentQ <https://ebu.assessmentq.com/>

The exam is subject to strict regulations as defined in this document.
The candidate receives instructions on how to access the platform by email beforehand.

CME CREDITS

Participation qualifies for 20 credits.

What to expect with ProctorExam

Make sure to read them before you start your exam.

WHAT YOU NEED

1 Laptop or Desktop



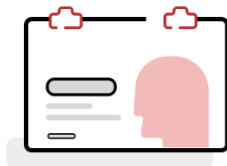
To take your exam, you need a computer as the chrome's plug-in required to share your screen is only compatible with a laptop or desktop.

2 Google Chrome



The installation of software on your computer is not necessary. However, you are strongly advised to use Google Chrome so you can run the latest version of our [screen sharing extension](#).

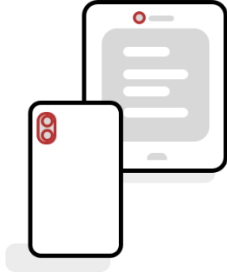
3 A photo ID



We need to identify you with a valid passport or ID card that has your name and photo on it.

Be sure to cover private information such as student number.

4 Smartphone or tablet



You are required to use the camera of your smartphone or tablet. You will need to download our app which is compatible with any Android 8+ or higher and iOS (Apple) 15.8+ or higher. To download the iOS app, click [here](#). For Android, click [here](#).

5 A steady internet connection

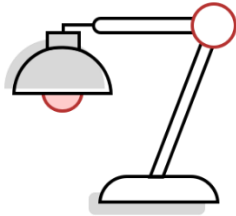


We require a steady internet connection (Wi-Fi will be required for mobile streaming) with a **minimum upload speed of 1,5 Mbps** (be careful: this is not your download speed). We strongly recommend you use an ethernet cable for your computer to ensure a stable connection. Disconnect any VPN.

When taking the exam at a hospital or clinic a firewall may be active. Have the IT department check the required access to assessmentQ URLs via this link <https://support.televic-education.com/hc/en-us/articles/115002200334-Firewall-access-to-assessmentQ-URLs>

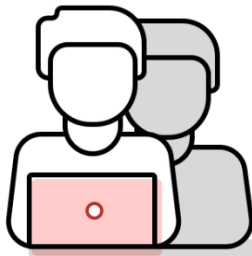
HOW TO SETUP YOUR ENVIRONMENT

✓ 1 Your room is well lit

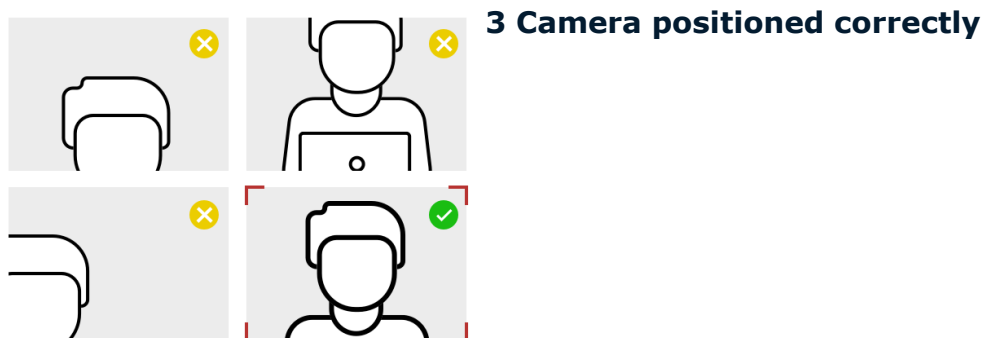


You should be clearly visible at all times. Through the setup process, you will be able to see what your webcam is sharing. Make sure that lighting is sufficient and no backlighting.

✗ 2 You are alone



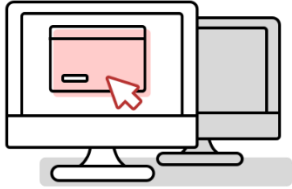
You should be the only one taking the exam, having someone else in the room is a serious violation. Make sure to cover any irrelevant private information you would not like to show, such as pictures or private objects.



For both your webcam and smartphone camera, we need to be able to see you and your surroundings well. Check the video feeds which are presented on your screen once you start your exam, they will show you exactly what is recorded and how.

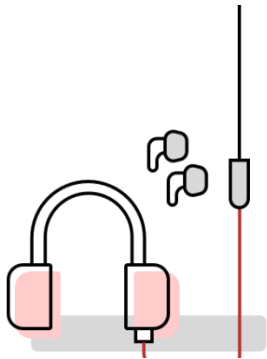
WHAT YOU SHOULD AVOID

✘ 1 No extra devices



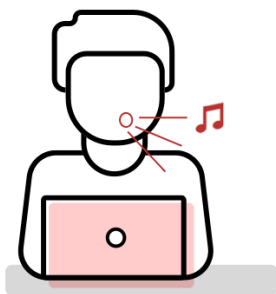
Aside from your smartphone it is not allowed to use additional devices such as second screens or tablets.

✘ 2 No headphones



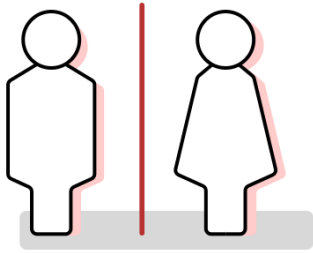
We need to be able to hear what you are hearing in order for the exam to be valid.

✘ 3 No talking (or singing)



Any noise and talking will be analysed for suspicious behaviour, so make sure you are in a quiet environment and that you refrain from talking out loud.

4 No toilet breaks



You will need to remain within the camera frame during the exam, so toilet breaks are not allowed. Make sure you go before starting the exam.